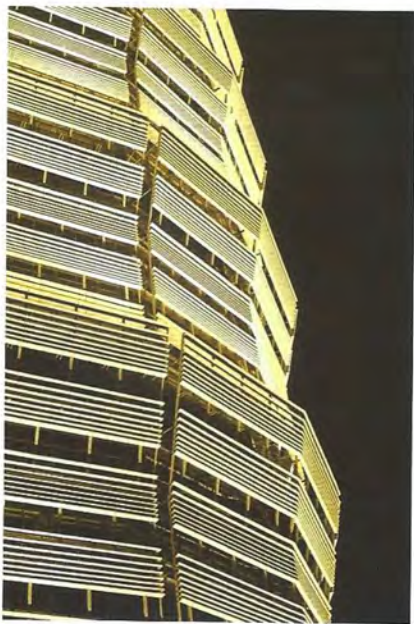


Zhengzhou Tower - Zhengzhou, China

郑州绿地中心



Perhaps one of the most challenging projects of the time, the facade lighting of Greenland's 300m high Zhengzhou Tower in Zhengzhou, China. The SOM designed building has a sunshade cladding on the outside of its concrete structure that gives the building its distinctive oriental shape. It was the desired of the owners to have these cladding panels, each about 20m high (!) fully lit with LED lighting technology. Not surprisingly many visual mock up tests were carried out to determine the type of system (floodlights or linear), its light distribution and coverage. But most interesting of all was the final client's selection to go for golden white, which was felt to have the best Feng Shui. While heavy debates were raised about the use of colour, the ultimate decision was to use warm (golden) white, which is what can be seen today. Each panel has a triple row of the most powerful

Philips linear floodlights which, with varying beams are aimed to the lower, middle and upper section of the cladding panels. While the lighting system has dynamic features it is generally fully lit throughout the night.

该项目主要是为郑州绿地中心做外立面灯光设计，也是 Martin 最具挑战性的项目之一。这座建筑由 SOM 建筑事务所设计，混凝土结构上方覆盖着一层彩色铝板，让其外形充满东方特色。业主要求修建这些高达 20 米的铝板，用 LED 全面打亮。毫无疑问，这需要进行大量的可视化模型测试，以确定整个灯光系统、光的分布以及覆盖范围。最有趣的是，为了配合“风水”的需要，客户选择了金白色的铝板。然而这样的用色引来了很多质疑的声音，最终改用白天也可以看得清楚的暖白色。每块铝板上都装有一个三层的大功率飞利浦线性投光灯，分别照亮铝板的底部、中部和上部。整个灯光系统动态运行，建筑在夜里尽展华媚。

